



Esher

Sixth Form College

Prospectus 2024



2-3	Welcome
4-5	Why Choose Esher
6-7	Ethos and Celebrating Diversity
8-9	Student Union
10-11	Choosing Your Courses and Course List
12-13	Choosing Your First Year Extension Studies
14-15	Choosing Your Second Year Extension Studies
16-17	Wider Skills Week
18-19	Our Facilities
20-21	Excellence@Esher
22-23	Excellence@Esher
24-25	Student Case Studies
26-27	Supporting Your Needs
28-29	Supporting Your Progression
30-31	Student Case Studies
32-33	Your Start At Esher
34-35	Ofsted
36-37	Keeping It Green
38-39	How To Apply and Admissions Journey



WELCOME

Thank you for your interest in the College. This prospectus aims to provide you with an insight into what life is like as a student at Esher Sixth Form College.

Inside you will find information on all aspects of the student experience, including a list of the wide range of courses on offer and the acclaimed support services, which underpin the high levels of success achieved by our students. As such, it should play an important role in helping you make an informed choice about your post-16 education, and I would therefore urge you to read the contents carefully.

Virtually any combination of courses is possible, and you will have a number of opportunities to discuss your proposed study programme, starting with your Course Interview.

We firmly believe that Esher Sixth Form College offers you the ideal environment in which to embark on the next stage of your educational career and one where you will be able to thrive academically and grow as an individual. We are committed not just to your academic success, but also to ensuring that you can develop the skills and qualities that will help you to prepare for the future. We have a strong track record in providing the appropriate support to allow our students to successfully progress to the next stage in their careers, whether that be higher education, an apprenticeship or employment.

When you join us, you will become part of a community of over 2000 full-time students from more than 100 different schools, each following an individual study programme relevant to their needs and ambitions. You will find a friendly and vibrant atmosphere where positive relationships are always promoted. Our teaching staff are specialists in post-16 education, both in their subject areas and in the support they provide through our tutorial system. We pride ourselves on a successful record in enabling students from all types of backgrounds to reach their full potential. Please see the section on 'Supporting Your Needs' if you have any additional educational needs.

I look forward to meeting you over the next year at the numerous events designed to deepen your understanding of the College. Full details of your admissions journey can be found towards the back of this prospectus. I hope you will be able to join us on these occasions and I look forward to welcoming you to the College.



Dan Hards, Principal

WHY CHOOSE ESHER?

Our excellent examination results are just one reason why students choose Esher Sixth Form College for their post-16 education.

Here are some more great reasons why you should choose to come to Esher:

Exceptional Support for all Students

- Personal Tutor
- Subject Clinics
- One-to-One Tutorials
- Learning Support
- College Nurse Service
- Counselling Service

Dedicated

&

Specialist
Teaching and
Support Staff

Super Sporting Facilities

- 3G all-weather football pitch
- Full-sized rugby pitch
- Netball and Tennis courts
- Student Gym
- Sports Hall



Free
WiFi

A great stepping
stone between
School and
University

Specialists in
16-18
Education

Comprehensive Extension Studies Programme

Music, Sports, Drama, Art,
Debating Society, Duke of
Edinburgh + much, much more



Fantastic Facilities

Specialist facilities for all curriculum areas including state of the art music Block; Brand new Study Centre and Dance Studio; 1,100+ Computers; Observatory.



Excellent Progression

Up to **85%** of students go on to Higher Education. Established support for progression to employment



Outstanding Results

99.4% pass rate
68.9% A*-B grades

A Reputation for Excellence

Considered 'Outstanding' by Ofsted



Over
40

A Level + BTEC
courses available

Equality



Diversity
at the forefront of
what we do



Very Good Transport Links

Close to the A3, 5 minute walk from Thames Ditton railway station, 15 minute walk from Esher railway station, 25 minute walk from Hampton Court

A more mature and diverse learning community



Excellence @Esher Programme

Supporting high achieving students develop their talents to the full

OUR ETHOS

Creating a culture of high expectations and outstanding achievements

At Esher Sixth Form College our students' success and wellbeing is at the heart of everything we do.

As a non-selective, open-access sixth form College for post-16 education for North East Surrey and South West London, our mission is to inspire and encourage all students to be the best version of themselves, both academically and personally.

This includes:

- **Creating a supportive and caring College community.** We actively promote friendship, tolerance and inclusivity so students can become responsible, informed citizens who have respect for themselves and others.
- **Delivering high quality, specialist teaching and learning.** Our staff are specialists in post-16 teaching and supporting academic achievement. 87.2% of Esher students who went on to degree level, gained a first or upper second well above the national average. (HESA 2021/22)
- **Broadening your life skills and experiences.** Ofsted rated our extension and enrichment provision as outstanding, and we continue to offer a wide-ranging programme of events, clubs, trips and activities that ensure our students develop far beyond the classroom.
- **Making a positive contribution to the wider community.** Students are encouraged to be involved in the local community through work experience, volunteering, mentoring and sport leadership programmes as well as with charitable events including our Esher College Africa Trust (ECAT).

"I really like the sense of community here, the friendly and helpful teachers and the fact that you are treated more like an adult. It is definitely a great stepping stone between school and university."

Maya, 6.2 student studying Film & Television Production BTEC and Performing Arts BTEC

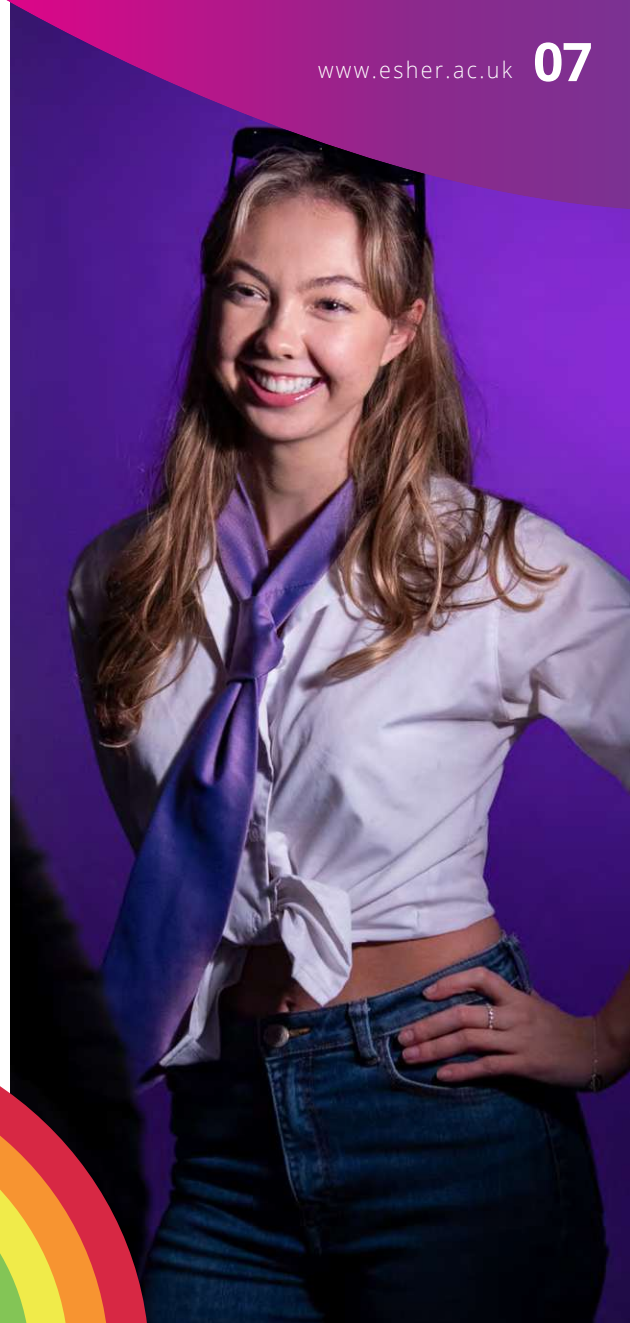


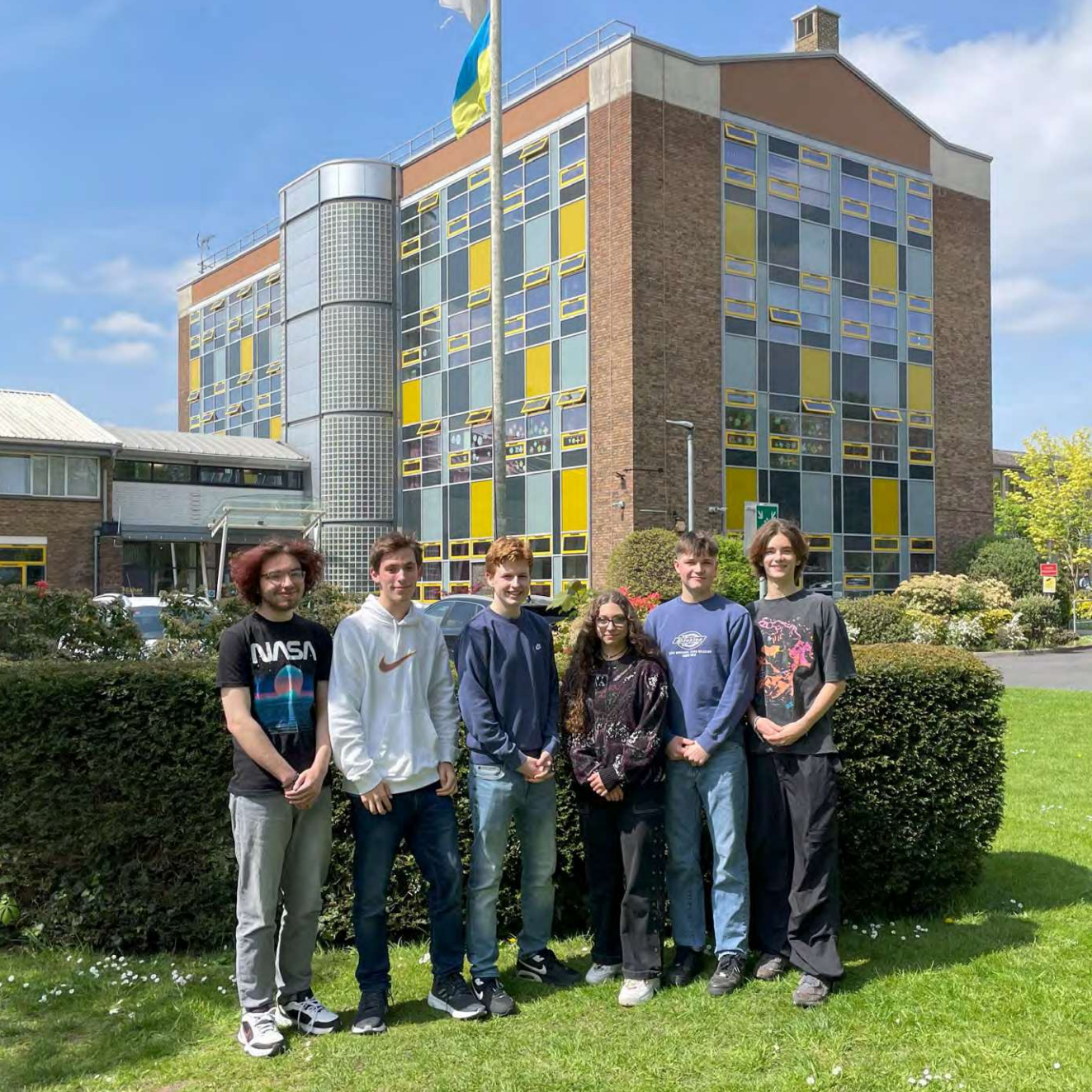
CELEBRATING DIVERSITY

As an inclusive sixth form college, we welcome a diverse range of students from more than 100 different schools. Everyone is treated and respected as an individual and we are proud of our positive and friendly community.

We actively encourage equal opportunities for all and have a wide range of support structures and groups in place including the Student Union, the Gender Sexuality Alliance (GSA) and the Christian Union - all of which are committed to creating an environment in which all students can fulfil their potential.

In other years, we've had groups including the Islamic Society, Anti-Racism Group and the Feminist Society – it varies depending on what the cohort want to do. All students are supported in their fundraising and awareness-raising events and we aim to celebrate diversity. Ultimately, our aim is to prepare our young adults with the tools to become leaders in creating the world they want to see.





MESSAGE FROM THE STUDENT UNION

Who are we?

Each year the Student Union is run by elected student representatives, who make sure your voice is heard. The six roles, held by our upcoming second years, include: President and Vice-President; Eco and Sustainability Executive; Marketing and Communications Executive; Events and Charities Executive; and an Equality and Welfare Executive.

What we do?

The SU is central to creating a welcoming and harmonious environment within the College for all students. We are responsible for liaising with staff and senior management to discuss student feedback, ideas or raise any issues ranging from College facilities to the quality of the café food. The SU President and Vice-President are also student trustees and attend meetings alongside other trustees.

The SU also supports and collects feedback from other societies within the College, including the Christian Union and the Gender Sexuality Alliance (GSA), as well as holding Student Voice meetings with SU representatives from all the tutor groups.

Our events:

The social life at Esher Sixth Form College is an important part of the student experience. The activities that the SU organise include lunchtime 'open mic' gigs, which help to raise money for charities, including the Esher College Africa Trust (ECAT), and our Summer Festival. This is held on the College grounds in celebration of a great first year for the 6.1s and the end of exams for 6.2s.

How do I join the SU?

Elections are in April when election fever takes over the College with some lively hustings.

Meet Carl Egginton, SU President 2023/24

On behalf of the Student Union, I would like to welcome you to Esher Sixth Form College!



Follow us on Instagram @EsherStudentUnion



CHOOSING YOUR COURSES

We have more than 40 A Level and BTEC courses, that you can take in any combination to create a Study Programme that is in tune with your individual abilities and ambitions.

Thinking About A Levels?

A Levels are two-year exam-based courses and the traditional route to university and beyond. A Levels are graded A* to E. If you're not sure what career you want to do, studying a selection of A Levels is a great way of keeping your options open.

Thinking About BTECs?

BTECs offer more practical, skills-based learning through coursework or themed units, and are excellent preparation for specialist degree courses. They are nationally recognised qualifications, and a credible alternative to A Levels.

Helping You Decide

Don't choose a subject just because you think it is what employers will want or because it is a subject to fall back on.

Instead ask yourself five things:

- 1) What subjects do you enjoy?
- 2) What subjects are you good at?
- 3) Is there a new subject, that your school doesn't offer?
- 4) What type of learning do you enjoy? Exams or Coursework? Practical or Theory?
- 5) Do you have a specific degree, job or industry in mind? Find out what the entry requirements are.

WHAT WILL YOU STUDY

A Levels

Art (Fine Art)
Biology
Business
Chemistry
Classical Civilisation
Computer Science
Dance
3D Design
Drama and Theatre
Economics
English Language

English Literature
English Language and Literature
Fashion and Textiles
Film Studies
French
Further Mathematics
Geography
German
Graphic Communication
History (Dictators and Imperialists)
History (Oppression and Equality)

History (Power and Belief)
Mathematics
Media Studies
Music
Philosophy
Photography
Physical Education
Physics
Politics
Psychology
Sociology
Spanish

BTECs

Applied Science*
Art and Design*
Business
Digital Film and Video
Production

Film and Television Production
Health and Social Care*
Information Technology
Music Technology
Performing Arts
Sports Coaching and
Development*

*Available as single BTEC (equivalent to one A Level) and double BTEC (equivalent to two A Levels) courses.

One Year Courses

English GCSE
Mathematics GCSE

Scan this QR code
for full details on
all our courses



CHOOSING YOUR FIRST YEAR EXTENSION STUDIES

Our Extension Studies programme is an excellent way for students to extend their learning beyond the classroom.

Universities and employers are increasingly interested in students' wider skills and abilities such as teamworking, problem solving, creativity, critical thinking, and the capacity to conduct independent research.

In your first year at Esher, 6.1 Students can choose from more than 40 Complementary Study options on offer. While in your second year, 6.2 Students choose a specific Progression Pathway to develop their skills even further.



First Year Complementary Studies

The choice of options varies each year, and the aim is to provide the broadest range so there is something for everyone.

You can either do one long course or two short courses in your first year. Some of our long courses (such as membership of a sports team or College Band), will last up until Easter. While our short courses (such as Latin For Beginners or Psychology In Film) last for only one term. If you choose a short course, you will need to choose another short course at changeover time in January, which you will follow until Easter.

You will choose your Complementary Study option at Enrolment in August.



Examples of First Year Short Courses	Examples of First Year Long Courses
Exploring Drawing	Debating Society
Latin for Beginners	Model United Nations
On Yer Bike Maintenance	History of LGBTQ+ and Culture
Wellbeing For Success	Duke Of Edinburgh Award (Gold)
Circuit Training	Scuba Diving
5-a-side Football	Community Sports Leader
Yoga	Robotics
Introduction To Darkroom Photography	College Production
Contemporary Vocal	Great Esher Sewing Bee

YOUR SECOND YEAR EXTENSION STUDIES

Second Year Progression Pathways

In the second year, you have an opportunity to choose a new Extension Studies course in the form of a Progression Pathway. There are a range of pathways to choose that include qualifications, specialised career or performance development, as well as study skills support.

Students continuing with four A Levels, the Duke of Edinburgh's Award Scheme, a sports team or who have timetabled Learning Support, do not need to add a Progression Pathway, as these programmes continue in the 6:2 year.





Examples of Second Year Progression Pathways

Qualifications	AS Further Maths Extended Project Qualification Higher Sports Leadership Award L3 Certificate in Speaking In Public (LAMDA)
Specialised Career Development	Creative Arts Portfolio Specialist Music Pathway Career Development
Performance Development	Theatre Workshop College Production Drama Audition Workshop
Study Skills Support	Academic Mentoring



WIDER SKILLS WEEK

A big part of student life at Esher is the range of trips, visits and extra-curricular activities we offer.

Our enrichment programme culminates at the end of the summer term with Wider Skills Week (WSW), when first year students take part in a wide range of activities, trips and unforgettable experiences.

From a four-day London Film Experience to Acrylic Painting Workshops, there are also curriculum-linked trips to France for work experience, and Munich for History, as well as general interest trips and activities. Students have the opportunity to gain new skills with courses in Music Making and setting up your own Label; Professional Theatre and Dance workshops including a dance workshop at the Pineapple Studio; CAD Design and Cooking.



Eda

Previous school: Teddington School

Subjects studying: Media Studies,
3D Design, Fashion and Textiles

Extension study: College Magazine
(6.1) and Creative Arts Portfolio (6.2)

“Esher has allowed me to grow, learn how to be more independent and explore my passions, all whilst being supported by my teachers. The College also organises some great careers and progression events, such as Higher Education Day, which have enabled me to find a pathway that is suitable for me after College.”



Find out what a typical day looks like for Eda.

Scan this QR code



OUR FACILITIES

Another great thing about studying at Esher is our on-site facilities.

Last September, we opened two new buildings; a purpose-built Study Centre with small breakout rooms for one-to-one and small group learning and support; and a state-of-the-art Dance Studio.

Around campus there are also many green spaces for quiet study or to relax with friends, while our sports facilities include a 3G all-weather, floodlit, full-size football pitch, a rugby pitch, and a grass nine-a-side football pitch, as well as newly refurbished netball and tennis courts.

In the classroom, we have specialist, state-of-the-art facilities for every subject.

These include:

- Specialist Music building, with two recording studios, six practice rooms and a suite of Macs running Logic Pro X
- Observatory, with four telescopes, used by our Astronomy Club
- Media and Photography Studio
- College Theatre
- Drama Theatre
- Student Gym
- Sports Hall
- Costa Coffee concessions



IT Services

Enjoy access to our progressive IT support facilities with everything you need at your fingertips for study at home or in college.

- Extensive Information Learning Technology: all students have access to high-speed WIFI throughout the College and Microsoft 365.
- 1100+ desktops and laptops on campus running Windows 10 and the Microsoft 365 Apps
- Specialist software, such as Adobe Creative Cloud suite (Photoshop, Premiere, After Effects, Illustrator etc), SOLIDWORKS, Logic Pro X, Sibelius and Microsoft Visual Studio.



The Learning Resource Centres

We call them LRC1 and LRC2 and both centres provide the perfect environment to support independent study and research.

LRC 1 has an extensive library of 27,000 + books, including textbooks. As well as journals and periodicals you will have access to photocopiers, a stationery shop and 155 PCs for student use.

Both areas are supported by a qualified Librarian and a team of LRC assistants, who are always happy to help you with research, borrowing equipment and accessing our comprehensive e-resources and subscription databases.



EXCELLENCE @ESHER

Whatever your particular aptitude or academic ambitions, there is a range of programmes at Esher Sixth Form College to support high-achieving students develop their talents to the full.

Subject-based Support

Designed to excite your curiosity, deepen your thinking and broaden your knowledge – high-achieving students have the opportunity to work on more demanding issues and problems. All departments provide enrichment and extracurricular activities.

Here are just a few examples:

- **Chemistry** – participation in the Cambridge Chemistry Challenge.
- **Maths** – entry into the UK Mathematics Trust Challenge.
- **STEM research** – research placements through the Surrey Science and Technology Regional Organisation and the opportunity to undertake a college-based research project to achieve a CREST Award.
- **Biology** – be challenged by taking part in Year 12 and 13 Biology Olympiads.
- **Politics** – regular opportunities to hear and question serving MPs.
- **History and English** – visiting speakers and authors.



“The sessions really helped me to become more confident and have meaningful conversations with likeminded people who I had never met before, which was fun”

Megan, 6.1 student

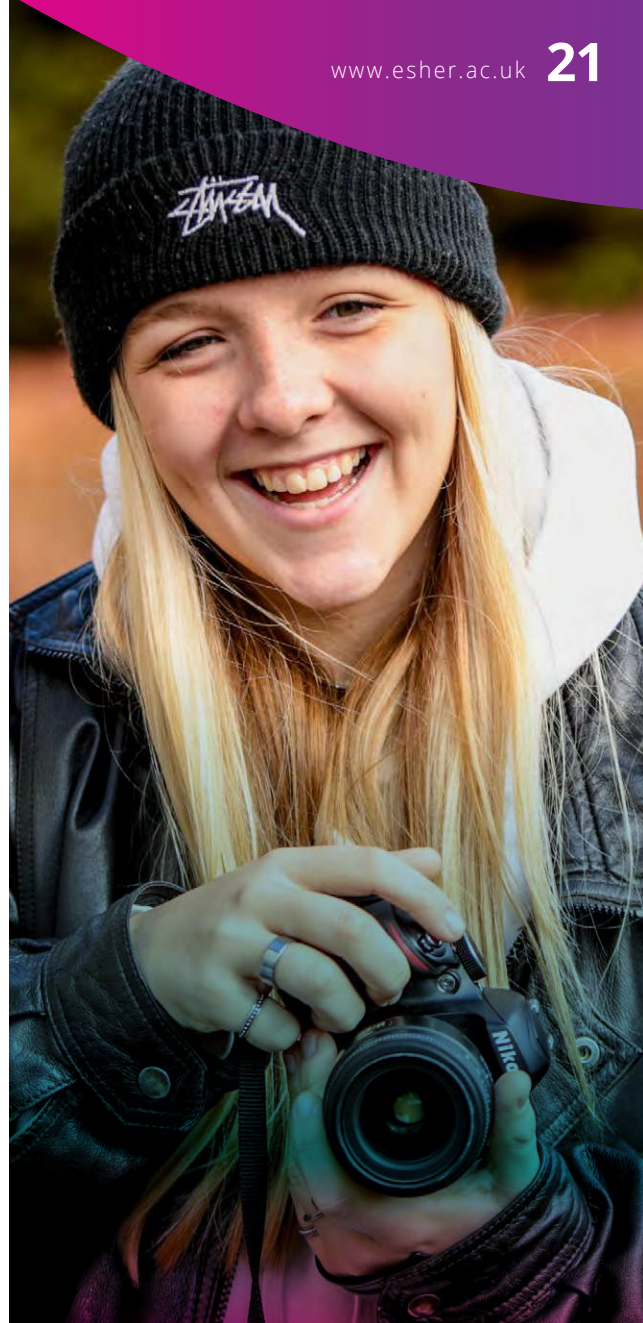
Creative Excellence

Many students come to Esher with a creative talent and a passion to perform at the highest level. We seek to cultivate these talents and help students flourish.

Within the creative arts departments, our staff have strong links with industry and often either come from industry backgrounds or are current practitioners in their field. This means they can offer students invaluable insights and guidance, rooted in real life experience.

High achieving students are encouraged to take our Creative Arts Portfolio course as an extension study option in their second year, which supports students applying for specialist university programmes. We also offer College Band, Choir and College Production options for students to practise their craft.

Drama, Music, Performing Arts and Dance students are offered support in preparing for auditions at prestigious institutions including, RADA, LAMDA and top conservatoires such as Bird College and Rambert.



EXCELLENCE @ESHER

High Achievers' Programme

This programme aims to improve the confidence, study habits and ambition of our highest achieving students. It helps them to reach the top by offering a wide range of enrichment activities and developing their confidence to make the most of these opportunities.

The students on this programme will meet regularly and access support such as:

- Information on university visits, conferences and summer schools.
- External speakers, including Esher Alumni.
- Early Higher Education preparation and Work Experience Guidance.
- Support for specific aptitude tests for some degrees, including LNAT (Law National Aptitude Test), TSA (Thinking Skills Assessment), and STEP (Sixth Term Examination Paper).
- Encouragement to enter academic competitions.
- Assistance to run a student-led subject group.
- Advice on developing the skills and mindset to achieve A*s and Distinctions.

They will receive guidance and support to choose the most appropriate activities for them to achieve ambitious progression.

THE EPQ

The Extended Project Qualification (EPQ) is an excellent opportunity for students to pursue an independent research project in an area of interest. There is almost endless scope as to what the project could research. The end product can either be a 5,000-word report, or the creation of an artefact (e.g. a fashion piece, film or song) with a supporting written report. The process of creating the end product (report or artefact) must be documented in a logbook and a presentation is given about the project at the end. The EPQ is the equivalent to half an A level.

At Esher students are given two periods a week on their timetable to work towards completing their project. One session is with a supervisor, who helps guide students through the process and to teach them important skills. The second is in the LRC where students receive support with researching and progressing their project.

EPQs are highly regarded by universities and completing it helps students to develop planning, research, time management and self-reflection skills. Each year around 350 students at Esher decide to undertake a project for EPQ and we are always amazed at the wide range of projects.

Oxbridge Programme

Run by our designated Oxbridge Co-ordinators, the Oxbridge Programme actively encourages academically-suited students to think about applying to Oxford or Cambridge, including many students who hadn't even considered this as an option.

Students attend Oxbridge Application conferences and taster events, as well as inviting outreach officers, key staff and former students from both universities to the College to share their experiences. Oxbridge applicants also have a weekly session to guide them through the Oxbridge process and help prepare them for interviews. Our teaching staff have substantial experience in supporting students preparing for the specialist tests, which are required for a number of specific subjects.

"I'm thrilled with my results. Not only do I have my teachers to thank for my grades, but also for motivating me to apply to Oxford in the first place."

Ben, studying English at Oxford University.

Medicine, Veterinary and Dental Programme

If you are thinking about becoming a doctor, dentist or vet, we offer a wide range of specialist support to help you apply for these competitive courses. Applicants can attend preparation and practice sessions for the University Clinical Aptitude Test (UCAT) and BioMedical Admissions Test (BMAT) both within the College and from commercial or charitable providers. We also have a well-established Community Volunteering Programme and students have weekly sessions to help them prepare with mock interviews and MMIs (Multiple Mini Interviews) as well as mentoring from former Esher Sixth Form College students who are already studying or practising in these fields.

Roll Of Sporting Excellence (ROSE) Programme

In collaboration with the Sport and Exercise Science Department at King's College London, the ROSE programme combines both sporting and academic support to help students develop as athletes whilst managing their academic studies. ROSE participants have the opportunity to meet a range of sporting professionals and experts, attending a series of workshops on everything from sports nutrition to sports psychology. There is also an opportunity to undergo physiological testing using a range of top-quality equipment at King's College.

Freddie

Previous school: Esher high
Subjects studying: History (Dictators and Imperialists), French, English Literature
Extension study: Debating Society (6.1)

"One thing that attracted me to Esher was the choice of subjects on offer compared to many other sixth forms, especially that they offered different History courses. This allowed me to choose subjects I was genuinely interested in, and I now enjoy my studies more."



Akina

Previous school: Sunbury Manor School

Subjects studying: Applied Science
BTEC National Diploma and Media Studies

Extension study: Model UN (6.1)

"The best thing about Esher Sixth Form College would be the library. The LRC is a great environment to work in as it has loads of resources to use and there are many desktops available. Working in the library makes me productive; I find myself doing more work."



SUPPORTING YOUR NEEDS



Learning Support

Our Learning Support team works with subject teachers to ensure that the individual learning needs of all students are identified and met. Based in our brand new purpose built Study Centre, the team offer a relaxing environment where students can drop in for a brief chat or self-refer for 1-2-1 study support. Our team also deliver weekly, timetabled study skills sessions helping students to bridge the gap between GCSE and A Level working. The sessions cover key study skills such as note-taking, essay writing, planning and organisation and management of coursework.

Support for students with Special Educational Needs/Disability (SEND) includes support for students with additional needs, such as Dyslexia, Dyspraxia, Autistic Spectrum Disorders (ASDs), Attention Deficit Disorder (ADD/ADHD), physical and sensory disabilities and other mental health diagnoses.

Where appropriate, and subject to the timely disclosure of need, we will ensure that examination access arrangements are investigated.

If you have a specific learning difficulty and/or disability, please let us know either on your application form or at enrolment.

EHCPs

Transition from a school to a college environment requires additional support for some students. Local Authority Consultation is undertaken to plan support for students with Education, Health and Care Plans (EHCPs).

Student Health and Wellbeing

The College recognises that mental health and wellbeing is of paramount importance and we have a team of staff dedicated to promoting and supporting mental health. We provide a supportive, inclusive environment and the College is proactive in its approach. Information about health and wellbeing is on the website to signpost students and parents to internal and external support services, which are available both online and in person.

Our College Nurse Service means we have a professional nurse on site every day to ensure all students' health needs are supported throughout their time at Esher. Whether it is a physical or mental health need, students can speak to the nurse about any concern they may have. The nurse works closely with external services, such as CAMHS and other service providers, to ensure that all available College support is being utilised.

We also have trained counsellors on site, who are available to give individual help to students with work-related or personal concerns. Students can

also access an online anxiety management course that we have designed specifically for the 16-19 age group.

We actively encourage students to disclose any concerns at the earliest opportunity, so that we are able to provide appropriate and timely support.

Student Finance

The Bursary Fund provides financial support for students from low-income families and is assessed against eligibility criteria. Free meals are also available for eligible students, who are allocated a credit per day to spend in College. Full details of student finance arrangements are available on the Esher Sixth Form College website.



SUPPORTING YOUR PROGRESSION

From choosing the right subjects at Enrolment, through to those big decisions about university, apprenticeships, gap years or employment – our experienced team of Careers and Progression Guidance professionals have got it covered.



Did you know?

- Up to 85% of Esher students progress to Higher Education including Art Foundation.
- Esher students gain more 1ST class degrees than state and independent providers (HESA).

DEGREE CLASSIFICATION*	1 ST or 2:1
Esher Sixth Form College	87.2%
Sixth Form Colleges	80.5%
All State Schools	79.9%

*Degree outcomes for former Esher 2021/22 graduates - HESA

Plannning for the Future

Our Progression Guidance department has a dedicated programme of events and activities to help students make informed choices about their future. There are also events for parents and carers to find out about the opportunities available to students and how they can best support their young people.

Whether it's help with Unifrog, a comprehensive online platform for choosing further education courses and apprenticeships, help with your CV or finding a work placement – our expert team is there to help. You can request an individual interview at any time either with one of the team or our independent careers advisor.

Just some of our progression initiatives include:

- **Career lunches and subject seminars** – throughout the year invited speakers come and share their career stories and inform students about careers and university degree courses.
- **Regular Progression Bulletins** – detailing latest career advice, university open days and part time job opportunities.
- **Gap Year Fair** – students can explore the many opportunities available from companies and charities.
- **Higher Education Day** – unique to Esher Sixth Form College, this event invites representatives from more than 70 universities. In the morning, there is a programme of specialist subject seminars followed by a carousel of activities, including a visit to the HE Fair and advice on how to choose a university and course. In the evening, we invite students and parents to discuss HE options further with college and university speakers about the application process.
- **Employment Seekers and Apprenticeships Information Evening** - with presentations from external speakers.
- **The Internship** – a virtual 3-day work experience opportunity with input from leading industry speakers.
- **After Esher Day** – offers two options for 6.1 students. For those thinking about university, there is help with completing your UCAS application. While for students seeking employment or an apprenticeship, we offer a complete mock assessment centre exercise.
- **CV and Personal Statement Writing Workshops** - expert advice on how to create the right impression from the start.



Alvin

Previous school: Sunbury Manor School

Subjects studying: Maths, Physics, Further Maths, Computer Science

Extension study: Robotics (6.1)

“My parents and I were impressed by Esher’s Ofsted review, as well as the results and later achievements of Esher alumni. It gave me something to strive for at my time at Esher.”

Kia

Previous school: Coombe Girls' School

Subjects studying: Mathematics, Philosophy, Computer Science

Extension study: Robotics (6.1)

"I chose Esher as I wanted a change in environment from my old school. Also, the fact that Esher purely catered to 16-18-year-olds really appealed to me! I felt the teachers would naturally be more prepared for post-18 options, such as apprenticeships, university places, and various admission tests."



YOUR START AT ESHER

We believe helping you settle into a new college environment and a new way of working is key to your success here at Esher. That's why our Your Start At Esher programme starts before teaching even begins.

Once you have been offered a place, we have a series of events specifically designed to help you prepare for the transition to sixth form.

Course Interview – between November and March, while you are still in Year 11, we will invite you to a Teams meeting to discuss your proposed Study Programme with a specialist teacher. It lasts about 15 minutes and is an excellent opportunity to talk through course combinations, ask questions and make changes to your chosen Study Programme.

Taster Days – after your GCSEs we will invite you into College to experience taster lessons in all your preferred subjects, plus a free choice session in case there is a subject you are undecided about.

Enrolment – once you have your GCSE results, you will be invited into the College at the end of August to finalise your study programme.

Induction – to make sure you get off to a flying start, you will be invited into meet your tutor group, with activities to help you get to know one another and help you find your way around the College. You will also get an extended one-to-one with your new tutor, to help ensure new relationships are swiftly established.

Your Tutor Group

Your personal tutor will most likely be a teacher in one of your chosen subjects. They will take a close interest in your academic progress and welfare, and if you have any problems, they will be your first port of call to help you sort things out.

Your tutor also delivers the Personal Development Programme, known as PDP. These are timetabled sessions each week with your tutor, specifically designed to help you succeed not only in your studies but also in your personal growth.

Progress Review

Over your two years at Esher, six Progress Review reports will be sent home, via email, which include information on effort and attendance, as well as progress in relation to your minimum grade. You will have the opportunity to discuss and identify strategies for further improvement with both your subject teachers and your tutor.



Learning To Learn

Many students find it a big step up from GCSEs to A Level, which is why we work with you from the start to develop the skills you need to make the transition successful.

For those that need it, support is offered through our Study Centre with half-termly Study Skills courses, delivered by our Learning Mentors, to help you adapt your study habits to succeed on our higher-level courses.

Your tutor and teachers will also provide termly one-to-one discussions to help identify your strengths and work on areas that require development, while PDP sessions in your Tutor Group will focus on particular issues when you need it, such as revision and exam techniques, and ways to minimise exam stress.

One of the biggest differences you will find is the amount of study you will do outside the classroom. Your timetable will include four lessons per subject per week, plus one hour with your Tutor Group and one lesson of Extension Studies. However, to be successful in your studies, the College recommends that students spend 10 hours per subject/per week (including the four timetabled lessons). But don't worry, your tutor and teachers will give you a good deal of support and help to develop the skills and mindset you need for this.

In your first term, the emphasis is on a smooth transition to College life, making new friendships and 'learning to learn' at sixth form level. For the rest of the year, your PDP sessions will focus on a variety of key issues relevant to young adults relating to your personal development, welfare and progression after Esher.



OFSTED

Ofsted Inspections

The College was last inspected in September 2022 and was awarded Grade 1: Outstanding for all areas of our provision. We were delighted with the outcome, which confirmed our position as one of the best sixth form colleges in the country.

The final gradings are as follows:

- Overall effectiveness:
Outstanding
- The quality of education:
Outstanding
- Personal development:
Outstanding
- Behaviour and attitudes:
Outstanding
- Leadership and management:
Outstanding
- Provision for learners with high needs:
Outstanding
- Education programmes for young people:
Outstanding

Ofsted inspectors said that students have "exceptionally positive attitudes towards their education," and that as a result, "learners are highly motivated, committed to their studies and thoroughly enjoy their time at Esher Sixth Form College."



What Ofsted said

About our students:

"Learners thrive in, and value, the inclusive and respectful culture staff create."

About our learning:

"Teachers explain new concepts to learners clearly and use a wide range of inspiring activities to enhance learning."

About our staff:

"Staff are proud to work at the College. They value the supportive and respectful culture and inclusive environment, which leaders work hard and successfully to create.... Staff feel valued and thoroughly enjoy working at Esher Sixth Form College."

About our learning support:

"Teachers and mentors understand learners' support needs extremely well.... As a result, learners with support needs rapidly gain confidence, independence and employability skills."

About the College:

"Leaders have ensured that all teaching is of high quality."

Chloe

Previous school: Sunbury Manor School

Subjects studying: Health and Social Care BTEC Diploma and Sociology A Level

Extension study: Sociology Health and Illness (6.1)

“The opportunities here academically and socially are amazing, and all the teachers and support staff have been so supportive and encouraging, they all want you to succeed and thrive to succession. I am so glad I made the decision to come Esher!”





Flossie

Previous school: Surbiton
High School

Subjects studying: Photography,
Business, Mathematics

Extension study: The Great Esher
Sewing Bee (6.1), Extended Project
Qualification (6.2)

"I picked Esher because I loved the idea of being more independent and getting some experience in a larger setting before starting university. There is a lot of mutual respect amongst the students and teachers at the College, and I find it easy to ask for support if I need it."

KEEPING IT GREEN

Esher Sixth Form College has a genuine commitment to environmental issues and strives to adopt a more sustainable 'footprint'.

We have an Environmental Champion who co-ordinates a number of initiatives with students and staff including our very own Green Week – to raise awareness and encourage students to follow the principles to reduce; reuse; recycle - as well as on-site recycling and the on-going endeavours of our allotment and garden site. Around the College, all new picnic benches are now made from recycled plastic. Our two recent building projects have sustainability at the heart of their design, being fitted with air source heat pumps, solar panels, and a timber structure. We are continuously reviewing our recycling facilities, recently introducing additional stationery recycling facilities, which can be found in the LRC.

Our College Café caterers ensure our approach is as sustainable as possible with regard to food sourcing, wastage and packaging. The café area uses paper cones, bamboo cutlery and compostable plant-based hot trays.

Cycling is also actively encouraged. The College now has 300 spaces for bike storage, recently expanded due to student and staff demand.



YOUR ADMISSIONS JOURNEY

1

Tuesday 4 July 2023

Applications open online for entry in September 2024.

2

Friday 29 September 2023

Online applications close at midday.

3

Wednesday 4 October 2023 (PM)

- We will email you to confirm if you have been successful in getting a place at Esher Sixth Form College.

4

November 2023 - Welcome To Esher Evening.

Successful applicants and their parents/carers can hear from our Principal Dan Hards, meet the leadership team, and chat to a panel of current students.

5

November 2023 – April 2024 - Course Interview.

You will have a discussion with a member of staff on MS Teams to agree your Study Programme.

6

June 2024 - Introduction Evening for Parents/Carers.

All prospective parents/carers are invited to the College for talks by the leadership team.

7

June/July 2024 - Taster Days for Students.

All students who have accepted their place are invited to come and experience a full day at Esher Sixth Form College.

8

Late August 2024 - Enrolment.

You will be notified of the exact date and time of your enrolment interview. This is when your proposed study programme will be confirmed, providing you have achieved the relevant grades at GCSE. It is vital that all students attend on the exact date and time that they have been allocated.

9

Early September 2024 - Your Start At Esher.

Meet your tutor group and the official timetable starts. You will meet your tutor and have a one-to-one interview as part of a range of induction activities. The College timetable will start a few days later and you will then become a full-time student at Esher Sixth Form College.

HOW TO APPLY



Online Applications for entry in 2024 open on Tuesday 4 July and close at midday on Friday 29 September 2023.

Guaranteed Applicants will automatically receive an offer of a place at the College. Places will then be allocated to Open Applicants using a ballot system held on Wednesday 4 October. As in previous years, the vast majority of Open Applicants will be offered a place. A number of applicants will be placed on a reserve list and some applicants may be unsuccessful.

Admission Enquiries

You can view the progress of your application and check all your messages by logging on to your online account. Our Admissions Manager will be happy to answer any questions you have about your application. If you are placed on the reserve list we will contact you should a place become available. The Admissions Department can be emailed at: **admissions@esher.ac.uk**

Entry Requirements

There is a minimum entry requirement of five GCSEs at Grade 4 and above. Access to some courses may require certain grades in certain GCSE subjects. Please see individual course information on our website.

ESHER SIXTH FORM COLLEGE

Weston Green Road
Thames Ditton
Surrey KT7 0JB
t 020 8398 0291
www.esher.ac.uk

Follow us on



Map not to scale - There are excellent transport links to the College. We are only a 5 minute walk from Thames Ditton railway station, a 15 minute walk from Esher railway station and we are close to the A3



